

TIRE CATALOGUE

2026

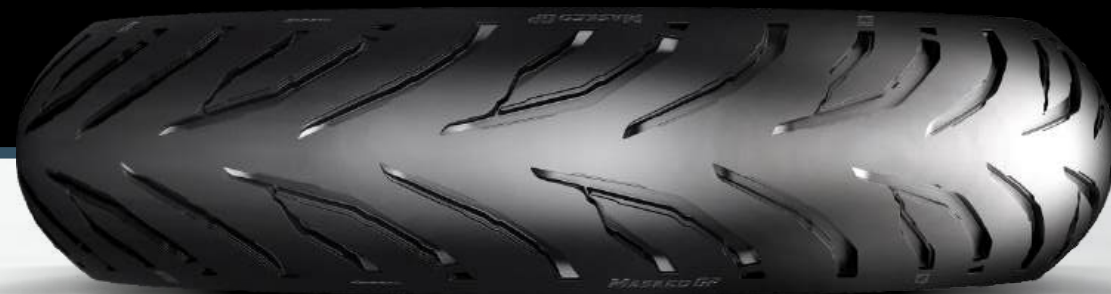
  
**IRATIRES**





# INNOVATION IS WHAT DEFINES US

At IRA TIRES we are differentiated, our designs are frequently updated in the search for INNOVATION. This is part of our DNA ira tires. We pay attention to the details of our tires, standing out both in terms of performance and aesthetics. We seek to bring you the best in terms of Design, Technology, Safety, Innovation, Quality and Trust.





# ESSENTIAL RECOMMENDATIONS FOR USE



## ❖ 1 - CONSULT

---

Always consult and follow the technical manual from your motorcycle manufacturer before choosing a tire.

## ❖ 2 - BEFORE ASSEMBLY

---

Check that the wheel is in perfect condition before starting to install the tire. Check the tire's internal cleanliness, making sure it is clean and free of any dirt residue. Labels and stickers from the inside of the tire must be removed. It is not recommended to install tires on recovered wheels at the risk of losing the warranty in the event of product failure.

## ❖ 3 - TIRES WITH INNER TUBES

---

In the case of tires that require an inner tube, check that this is compatible with the dimensions of the chosen tire. Check the recommendations on the packaging of your IRA inner tube. Using incorrect sizes compromises the safety and warranty of your inner tube and tire.

## ❖ 4 - VERIFICATION

---

After confirming the compatibility between the inner tube and the tire, check the condition of the wheel; Inflate the tube slightly before assembly it to the tire to help with seating.

## ❖ 5 - START OF TIRE ASSEMBLY

---

For your safety and the integrity of the tire/inner tube/wheel, always use the appropriate tools to avoid damage and breakdowns. **Always use a release agent (neutral liquid soap diluted 50% in water)** to lubricate the edges of the tire beads, this will facilitate the perfect fit between the tire and the wheel, in addition to avoiding contamination by materials inadequate. **DO NOT USE MINERAL-BASED LUBRICANTS SUCH AS VASELINE AND OTHER PETROLEUM DERIVATIVES.**

## ❖ 6 - INNER TUBE ACCOMMODATION

---

Use a protector ("tape") internally to the wheel to prevent damage to the air chamber. Inflate to 10 pounds of pressure and slightly move the valve to the correct setting of the set. After this adjustment, inflate the chamber with the pressure recommended by the motorcycle manufacturer.

## ❖ 7 - WEEKLY CALIBRATION

---

Check the weekly calibration, preferably with cold tires. This is important to maintain safety, avoid breakdowns and extend the life of your tires.

## ❖ 8 - INCORRECT PRESSURE

---

Tires with incorrect pressure, whether above or below recommended, reduce their useful life as they suffer from irregular tread wear, cracks in the grooves, cracks on the side and overheating; which puts the driver's safety at risk.



# DEVELOPED AND MANUFACTURED IN BRAZIL



**MASKED GP**

PÁG. **05**



**MASKED SCOOTER**

PÁG. **06**



**MASKED SCOOTER 2**

PÁG. **07**



**MASKED URBAN**

PÁG. **08**



**Quiz GP**

PÁG. **09**



**SOHO Br**

PÁG. **10**



**BUNKER ADAPT**

PÁG. **11**



**BUNKER ADAPT DUST**

PÁG. **12**



**BUNKER X-IT  
MID-SOFT**

PÁG. **13**



**BUNKER X-ONE  
MID-HARD**

PÁG. **14**



**INNER TUBES**

PÁG. **15**



**INNER TUBE APPLICATIONS**

PÁG. **16**

**ATTENTION TO THE DETAILS**

PÁG. **17**

**TIPS OF USE**

PÁG. **18**

**SIDEWALL INFORMATION**

PÁG. **19**

**SPEED TABLE**

PÁG. **20**



# MASKED GP

When cornering, the profile was designed to increase the contact area between the tire and the surface. The motorcycle's inclination is compensated with a larger support area, ensuring grip even in tight curves.

The multi-spoke design profile contributes to improved performance that helps with tighter turns and quick changes of direction.



SIZES:

FRONT  
17" **110/70-17**  
M/C 54S TL

REAR  
17" **130/70-17**  
M/C 62S TL

17" **140/70-17**  
M/C 66S TL

## DIRECTION OF ROTATION

FRONT  
INVERTED

→ Reduced tire wear by counteracting the forces acting on the front and rear, in addition to intensifying drainage from 35km/h.

## DISTRIBUTION OF THE GROOVES

→ Set of three harmoniously distributed grooves, providing a wide contact area between the tire and the surface. They help when cornering sharply, promoting greater grip, which makes driving more agile and sporty.



## MAIN APPLICATIONS:

FRONT TIRE:

REAR TIRE:

110/70-17

+

130/70-17

110/70-17

+

140/70-17

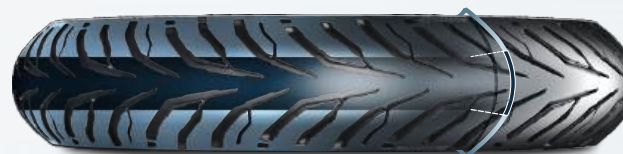
INDUSTRY:

MODEL:

YAMAHA:	FAZER 250 (2005 - 2016) FAZER 250 ABS (2018 - 2023)
KAWASAKI:	NINJA 125 (2019 - 2023)
DAFRA:	NEXT 250 (2013 - 2017) NEXT 300 (2019 - 2023)
TRAXX	TSS 250 (2015 - 2017)
SHINERAY:	JEF 150 (2020 - 2024)
HAOJUE:	DR 160 (2021 - 2023)
HONDA:	CB 300R (2009 - 2015) CBR 250R (2012 - 2015)
YAMAHA:	FAZER FZ15 ABS (2024) FAZER FZ25 ABS (2024) R3 (2016 - 2017)
KAWASAKI	NINJA 300 (2013 - 2018) Z 300 (2015 - 2019)

(TUBELESS)

## DAD Dual Angle Design



### → ANGLE A FRONT:

Reduced wear during sudden braking.

REAR:  
Semi-slick area, greater support, grip, better acceleration and braking.



### → ANGLE B FRONT:

Large contact area combined with the grooves for efficient drainage.

REAR:  
Located on an extensive rubber surface that provides greater safety and grip when cornering.



# MASKED SCOOTER

We specifically opted for harmoniously distributed angulations, which promote a greater contact area during curves, prioritizing grip and safety.

Multi-spoke design for better performance when making steeper turns, as well as making quick changes of direction safely.



SIZES:

FRONT

14" **90/90-14**  
M/C 46P TL

REAR

14" **100/90-14**  
REINF. M/C 57P TL

## DIRECTION OF ROTATION

FRONT  
INVERTED

Extends durability by counteracting the forces that act on the contact surface between the front and rear tires, which helps reduce wear. There is a significant improvement in drainage from 35 km/h.

## DISTRIBUTION OF THE GROOVES

→ **MAIN GROOVES**  
Positioned in balance with the tire profile, the distribution of the grooves progressively increases the tire's drainage efficiency and grip on the ground.

→ **SECONDARY GROOVES**  
Comfort: Narrow grooves improve pressure distribution evenly, making it easier for the tire to adapt to the surface.

## REINF

REINFORCED  
STRUCTURE.

Braking: The "V" shaped design of the groove on the front tire helps water flow. On the rear, it provides greater grip on the surface.



FRONT TIRE:

REAR TIRE:

INDUSTRY:

MODEL:

MAIN  
APPLICATIONS:

90/90-14

+

100/90-14

HONDA:

PCX (2013 - 2019)

(TUBELESS)

DAD  
Dual Angle Design



→ **ANGLE A**  
Continuous and semi-continuous contact area with the asphalt, which provides greater comfort while driving.

→ **ANGLE B**  
Greater contact area of the tire with the asphalt during curves, increasing the range of support and promoting more stability when going around them, even if it is at the limit of the slope.

**AVOIDING EXCESSIVE HEATING.**  
Grooves strategically designed to dissipate heat are associated with the special compound for the Scooter line. They prevent overheating and reduce tire wear without compromising grip.



# MASKED SCOOTER 2

**Updated design**, maintaining the same safety and stability properties. Its tread profile maintains the segment in three sectors in order to provide more stability even on the steepest curves, guaranteeing greater grip.

It has the Multi-Radius Design for better performance when executing tighter curves, as well as for making sudden changes in direction safely.



SIZES:

FRONT	
14"	<b>100/80-14</b> M/C 48P TL
12"	<b>90/90-12</b> M/C 44J TL

REAR	
14"	<b>120/70-14</b> REINF. M/C 61P TL
10"	<b>100/90-10</b> M/C 56J TL

## DIRECTION OF ROTATION

FRONT  
INVERTED

Prolonged durability due to the opposite directions of rotation of the tread, balancing the forces acting on the front and rear tires, reducing wear.

## DISTRIBUTION OF THE GROOVES

### → MAIN GROOVES

Made with acute angles and defined curves, the grooves inclined towards the center of the tread help both with water drainage and air circulation.

### → SECONDARY GROOVES

Drainage: Narrower grooves that facilitate the drainage of water by capillary action, also balance the distribution of pressure, facilitating the adaptation of the tire to the asphalt. There is a significant improvement in drainage from 35 km/h onwards.  
Braking: Positioned diagonally to the tread, they help distribute pressure over the contact surface, increasing grip.

**REINF**

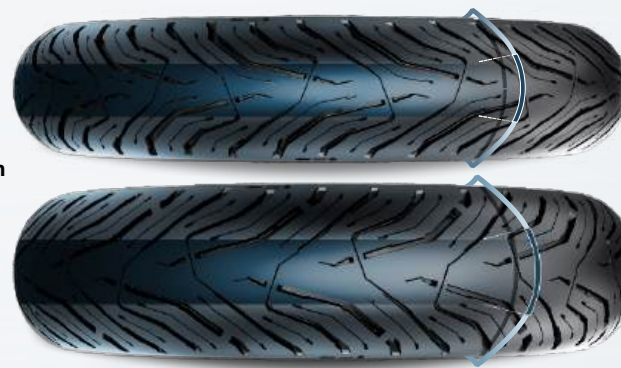
REINFORCED  
STRUCTURE.

## MAIN APPLICATIONS:

FRONT TIRE:		REAR TIRE:	INDUSTRY:	MODEL:
<b>90/90-12</b>	<b>+</b>	<b>100/90-10</b>	HONDA:	ELITE 125 (2018 - 2024) LEAD 110 (2010 - 2016)
<b>110/70-13</b>	<b>+</b>	<b>130/70-13</b>	YAMAHA:	NMAX ABS (2016 - 2026)
<b>110/70-14</b>	<b>+</b>	<b>130/70-13</b>	HONDA:	PCX ABS (2023 - 2026)
<b>100/80-14</b>	<b>+</b>	<b>130/70-13</b>	SHINERAY:	URBAN 150 EFI (2025 - 2026)
<b>100/80-14</b>	<b>+</b>	<b>120/70-14</b>	HONDA:	PCX (2020 - 2022)

(TUBELESS)

## DAD Dual Angle Design



### → ANGLE A

Contact area segmented by narrow grooves that help in the homogeneous distribution of the forces acting on the tire, which provides greater comfort while driving.

### → ANGLE B

Expansion of the contact area with the surface during curves; promoting more stability and enabling greater ease when going around them, even at the limit of inclination.

### AVOIDING EXCESSIVE HEATING.

The grooves were designed and distributed to dissipate heat; these are complemented by the specific compound used in the Scooter line; preventing overheating, reducing tire wear and ensuring grip.





# MASKED URBAN

We developed new angles for this model, promoting superior safety, greater braking efficiency and more stability during inclined curves.

It has a specific multi-spoke profile that was developed to increase performance on different inclinations of the motorcycle, making riding more agile when taking turns, which increases stability in curves.



SIZES:

	FRONT
18"	<b>80/100-18</b> M/C 47P TL
17"	<b>70/90-17</b> M/C REINF. 43P TL
17"	<b>60/100-17</b> M/C 33P TL

	REAR
18"	<b>90/90-18</b> M/C REINF. 57P TL
18"	<b>100/80-18</b> M/C REINF. 59P TL
14"	<b>80/100-14</b> M/C REINF. 49P TL

## DIRECTION OF ROTATION

FRONT  
INVERTED

Extends durability by counteracting the forces acting on the front and rear tire contact surfaces, reducing wear and helping drainage from 35 km/h.

### → MAIN GROOVES

Offer greater agility during intermediate tilt for shifting directional, promoting greater stability even in adverse conditions. Tilted close to the shoulder, they increase the area of contact with the surface, promoting more grip in tight curves, which provides greater stability.

### → SECONDARY GROOVE

Riding comfort has been improved due to the presence of "shock-absorbing grooves" that increase the tire's flexibility over the surface and neutralize uneven pavement vibrations. During braking, its conformation angle helps to reduce speed.

## REINF

REINFORCED  
STRUCTURE.

MAIN  
APPLICATIONS:

FRONT TIRE:		REAR TIRE:	INDUSTRY:	MODEL:
80/100-18	+	90/90-18	HONDA:	CG 160 CARGO (2018 - 2024) CG 160 FAN (2017 - 2024)
			YAMAHA:	FACTOR 125I ED (2022 - 2024) FACTOR 150 ED (2016 - 2024)
			SUZUKI:	GSR 125 (2013 - 2016) YES (2005 - 2016)
			DAFRA:	RIVA 150 (2012 - 2017) RIVA CARGO (2012 - 2017)
80/100-18	+	100/80-18	TRAXX:	TSS 150 (2016 - 2017)
			SHINERAY:	FIRE 150 (2014 - 2018)
			HONDA:	CG 160 TITAN (2017 - 2024)
70/90-17	+	80/100-14	YAMAHA:	FAZER 150 USB (2024)
			HAOJUE:	DK 150 - TODAS (2018 - 2024) DK 160 (2023 - 2024)
			HONDA:	BIZ 125 EX (2025 - 2026)
			SHINERAY:	JET 50 (2025 - 2026) JET 125 (2025 - 2026) RIO 125 EFI (2025 - 2026)
60/100-17	+	80/100-14	HONDA:	BIZ 125 ES (2025 - 2026) POP 125 EFI (2025 - 2026)

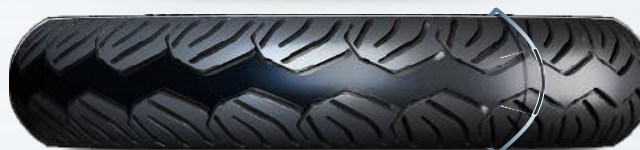
(TUBELESS)

DAD  
Dual Angle Design



### ANGLE A

→ Central area with continuous tread and side edges in a "zig-zag" format, help with stability and reduce the distance for sudden braking.



### ANGLE B

→ Region that promotes a greater contact area between the tire and the surface in tight curves, enabling more grip even in adverse weather conditions.





# Quiz GP

## GROOVES ASYMMETRICAL

Asymmetry in the position of the grooves as a differentiator not only aesthetically, but mainly functionally, reinforcing the construction characteristics.



SIZES:

	FRONT
17"	<b>60/100-17</b> M/C 33L TT
18"	<b>2.75-18</b> M/C 42P TT
18"	<b>80/100-18</b> M/C 47P TT

	REAR
14"	<b>80/100-14</b> REINF. M/C 49L TT
18"	<b>90/90-18</b> REINF. M/C 57P TT
	FRONT/REAR
17"	<b>2.75-17</b> REINF. M/C 47P TT

## DISTRIBUTION OF THE GROOVES



USES INNER TUBE

## ASYMMETRY

As a distinguishing feature of the model, the asymmetrical positioning of the grooves prolongs the durability of the tread, improves the motorcycle's performance, increases stability both in curves and on straight lines; in addition to providing more comfort while driving. Water drainage has become more effective due to the greater supply of grooves available when running the tire on wet surfaces.



## MAIN APPLICATIONS:

FRONT TIRE:	INNER TUBE FRONT:	+	REAR TIRE:	INNER TUBE REAR:	INDUSTRY:	MODEL:
<b>2.75-18</b>	(MI 0518)		<b>90/90-18</b>	(MI 0518)	DAFRA:	<b>SPEED 150</b> (2008 - 2015)
<b>60/100-17</b>	(MI 0417)		<b>2.75-17</b>	(MI 0417)	TRAXX:	<b>WORK 125</b> (2009 - 2015)
					SUZUKI:	<b>GS 120</b> (2013 - 2018)
					SHINERAY:	<b>PHOENIX 50/S/EFI</b> (2011 - 2014)
					HONDA:	<b>BIZ 100 - ALL</b> (1999 - 2015)
						<b>BIZ 110 - ALL</b> (2016 - 2024)
						<b>BIZ 125 - ALL</b> (2016 - 2024)
						<b>POP 100</b> (2006 - 2015)
						<b>POP 110</b> (2016 - 2024)
<b>60/100-17</b>	(MI 0417)		<b>80/100-14</b>	(MI 0514)	TRAXX:	<b>SKY 125</b> (2011 - 2017)
						<b>SKY 50 / PLUS</b> (2014 - 2016)
					SHINERAY:	<b>JET 125 - ALL</b> (2014 - 2023)
						<b>JET 50S</b> (2024)
						<b>RIO 125 EFI</b> (2024)
					MOTTU:	<b>POP 110I</b> (2015 - 2024)
<b>80/100-18</b>	(MI 0518)		<b>90/90-18</b>	(MI 0518)	HONDA:	<b>CG 125 - ALL</b> (1987 - 2018)
<b>2.75-18</b>						<b>CG 150 - ALL</b> (2004 - 2016)
						<b>CG 160 START</b> (2016 - 2024)
					YAMAHA:	<b>FACTOR 125</b> (2009 - 2016)

## REINF

REINFORCED STRUCTURE.

+ GRIP  
+ DURABILITY



→ On the front tire, the continuous groove, centered and perpendicular to the tread, has the function of draining water and helping the bike's stability during sudden changes in direction.

→ On the rear tire, the continuous and level central area provides greater comfort when driving on roads. Asymmetrical grooves promote greater water drainage and consequently increase the tire's grip on the asphalt.



# SOHO Br

Soho BR is a model with a reinforced structure to withstand the impacts of everyday life on the streets of large cities. It was designed to be an option when we evaluate cost-benefit, as it provides durability for those who need to travel long distances in traffic every day.



SIZES:

	FRONT
17"	<b>60/100-17</b> M/C 33L TT
18"	<b>2.75-18</b> REINF. M/C 48P TT
18"	<b>80/100-18</b> M/C 47P TT

	REAR
14"	<b>80/100-14</b> REINF. M/C 49L TT
18"	<b>90/90-18</b> REINF. M/C 57P TT
	FRONT/REAR
17"	<b>2.75-17</b> REINF. M/C 47P TT



**HIGH MILEAGE.**



**USES INNER TUBE**

Combining traditional external design with already consolidated functionality and efficiency; The structure of the grooves provides ideal drainage to tackle wet asphalt without reducing driving stability and safety.

**TRADITION AND EFFICIENCY**

→ **Wide, perpendicular and continuous grooves** along the tread ensure constant drainage on rainy days and heat dispersion on hot days.

→ **Secondary grooves** help dissipate pressure when exposed to road challenges in large cities.



	FRONT TIRE:	INNER TUBE FRONT:	REAR TIRE:	INNER TUBE REAR:	INDUSTRY:	MODEL:
	<b>2.75-18</b>	(MI 0518)	<b>+ 90/90-18</b>	(MI 0518)	DAFRA:	SPEED 150 (2008 - 2015)
	<b>60/100-17</b>	(MI 0417)	<b>+ 2.75-17</b>	(MI 0417)	TRAXX:	WORK 125 (2009 - 2015)
					SUZUKI:	GS 120 (2013 - 2018)
					SHINERAY:	PHOENIX 50/S/EFI (2011 - 2014)
					HONDA:	BIZ 100 - ALL (1999 - 2015)
						BIZ 110 - ALL (2016 - 2024)
						BIZ 125 - ALL (2016 - 2024)
						POP 100 (2006 - 2015)
						POP 110 (2016 - 2024)
<b>MAIN APPLICATIONS:</b>	<b>60/100-17</b>	(MI 0417)	<b>+ 80/100-14</b>	(MI 0514)	TRAXX:	SKY 125 (2011 - 2017)
	<b>2.75-17</b>					SKY 50 / PLUS (2014 - 2016)
					SHINERAY:	JET 125 - ALL (2014 - 2023)
						JET 50S (2024)
						RIO 125 EFI (2024)
					MOTTU:	POP 110i (2015 - 2024)
					HONDA:	CG 125 - ALL (1987 - 2018)
						CG 150 - ALL (2004 - 2016)
						CG 160 START (2016 - 2024)
					YAMAHA:	FACTOR 125 (2009 - 2016)

**REINF**

**STRUCTURE REINFORCED.**

**EFFICIENCY AND FUNCTIONALITY CONSOLIDATED**



**CHARACTERISTICS**

- It has diagonal construction;  
- Created with a traditional design.  
It is a tire that offers good performance and handling. Ideal for daily challenges in big cities, a functional tire already established on the market.

**REINFORCED STRUCTURE FOR EVERYDAY LIFE IN THE CITY.**



# BUNKER ADAPT

**CONTROL IN ANY TERRAIN**  
For those who drive more boldly and demand more from the tire, even on off-road terrain.



## DISTRIBUTION OF THE GROOVES

→ **FRONT**  
Spaced and inverted grooves, in the shape of an inverted letter "V", were designed to increase grip and the feeling of well-being while driving.

→ **REAR**  
The same design, cutouts and elements, but with an inverted direction and proportionally larger; promote superior and more effective braking, as well as regaining speed on off-road terrain. The larger blocks improve grip on paved terrain.

## CHAMFERS

→ Positioned on the walls of larger blocks, these simple recesses help with traction on off-road terrain without compromising grip on asphalt.

**Application: 90% On-Road and 10% Off-Road**



SIZES:

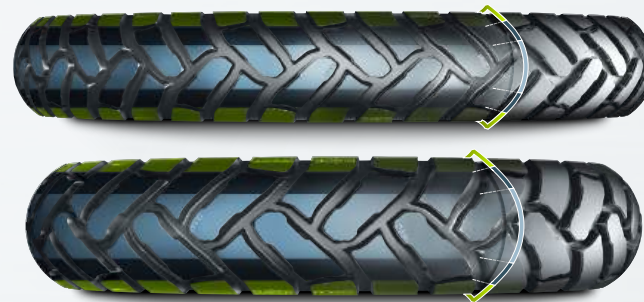
	FRONT
19"	<b>90/90-19</b> M/C 52P TT
21"	<b>90/90-21</b> M/C 54S TT
18"	<b>2.75-18</b> M/C 42P TT
17"	<b>60/100-17</b> M/C 33L TT

	REAR
17"	<b>110/90-17</b> M/C 60P TT
17"	<b>120/90-17</b> M/C 64S TT
18"	<b>120/80-18</b> M/C 62S TT
18"	<b>90/90-18</b> REINF. M/C 57P TT
14"	<b>80/100-14</b> REINF. M/C 49L TT



**USES  
INNER TUBE**

**REINF  
STRUCTURE  
REINFORCED.**



→ Aesthetics and functionality combined to aid traction, especially on off-road terrain.

→ Transition grooves that segment blocks and maintain large areas of grip for use on asphalt, as well as providing traction on rough terrain.

→ Large blocks and inverted groove spacing ensure traction in tight corners even in mud.

## MAIN APPLICATIONS:

FRONT TIRE:	INNER TUBE FRONT:	REAR TIRE:	INNER TUBE REAR:	INDUSTRY:	MODEL:
<b>60.100-17</b> (MI 0417) + <b>80/100-14</b> (MI 0514)				HONDA:	BIZ 100 - ALL (1999 - 2015) BIZ 110 - ALL (2016 - 2024) BIZ 125 - ALL (2016 - 2024) POP 100 (2006 - 2015) POP 110 (2016 - 2024)
				TRAXX:	SKY 125 (2011 - 2017) SKY 50 / PLUS (2014 - 2016)
				SHINERAY:	JET 125 - ALL (2014 - 2023) JET 50S (2024) RIO 125 EFI (2024)
				MOTTU:	POP 110I (2015 - 2024)
				HONDA:	CG 125 - ALL (1987 - 2018) CG 150 - ALL (2004 - 2016) CG 180 START (2016 - 2024)
<b>2.75-18</b> (MI 0518) + <b>90/90-18</b> (MI 0518)				YAMAHA:	FACTOR 125 (2009 - 2016)
				DAFRA:	SPEED 150 (2008 - 2015)
				TRAXX:	WORK 125 (2009 - 2015)
<b>90/90-19</b> (MI 0519) + <b>110/90-17</b> (MI 0617)				HONDA:	NXR 125 BROS - (2003 - 2015) NXR 150 BROS - (2003 - 2015) NXR 180 BROS - (2014 - 2024) XRE 190 (2016 - 2020)
				YAMAHA:	CROSSER 150 S / Z (2024) XTZ 150 CROSSER (2014 - 2020)
				TRAXX:	FLY 150 (2016 - 2017) FLY 250 (2015 - 2018)
				SHINERAY:	DISCOVER 250 (2014 - 2018) EXPLORER 150 (2017 - 2018) SHI 175 (2024)
				HAOJUE:	NK 150 (2023 - 2024)
<b>90/90-21</b> (MI 0521) + <b>120/90-17</b> (MI 0617)				HONDA:	NX4 FALCON (1998 - 2008) NX 350 SAHARA (1990 - 1999)
				HONDA:	SAHARA 300 (2024) XRE 300 (2009 - 2020) LANDER 250 ABS (2024)
<b>90/90-21</b> (MI 0521) + <b>120/80-18</b> (MI 0618)				YAMAHA:	TÉNÉRÉ 250 (1996 - 2020) XTZ 125 - ALL (2002 - 2016) XTZ 250 LANDER (2006 - 2018)

## DIRECTION OF ROTATION (FRONT INVERTED)

→ It promotes tire durability by counteracting the forces acting on the contact surfaces between the front and rear, reducing wear.



# BUNKER ADAPT DUST

## DYNAMIC FORMULA

Design and functionality are combined to provide a balance between dynamism and steering stability, promoting driver confidence both on asphalt and even on extreme terrain.



SIZES:

	FRONT		REAR
18"	<b>80/100-18</b> M/C 47P TT	18"	<b>90/90-18</b> REINF. M/C 57P TT
19"	<b>90/90-19</b> M/C 52P TT	17"	<b>110/90-17</b> M/C 60P TT
21"	<b>90/90-21</b> M/C 54S TT	18"	<b>120/80-18</b> M/C 62S TT



USES  
INNER TUBE

Application:  
25% On-Road  
75% Off-Road

MAIN  
APPLICATIONS:

## INNOVATIVE DEVELOPMENT THE TREAD.

The BUNKER ADAPT DUST is the tire for extreme conditions in all conditions. Types of terrain, the most daring in the category. Your IRA TIRES DNA contains both the essence of urban adventure and off-road. On land accidents, even in the case of a tire for mixed use, it maintains always the traction capacity whether on steep climbs or simple trails and complex. Our exclusive technology works in harmony with any surface, reaching wherever you want with more strength and robustness.

## CASING TENSION CONTROL SYSTEM

Controls the distribution of stresses on the coating, which alleviates the impacts during riding, giving you total control over the driving the motorcycle.

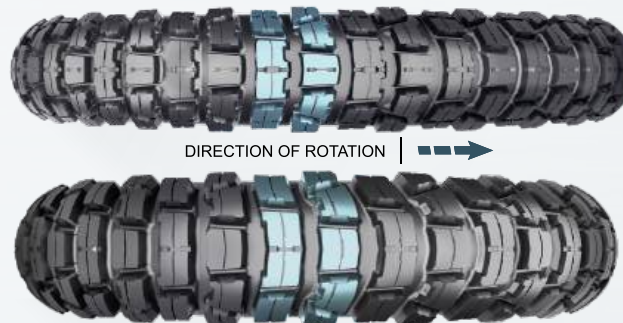


FRONT TIRE:	INNER TUBE FRONT:	REAR TIRE:	INNER TUBE REAR:
<b>80/100-18</b>	(MI 0518)	<b>90/90-18</b>	(MI 0518)
<b>90/90-19</b>	(MI 0519)	<b>110/90-17</b>	(MI 0617)
<b>90/90-21</b>	(MI 0521)	<b>120/80-18</b>	(MI 0618)

INDUSTRY:	MODEL:
HONDA:	CG 125 - ALL (1987 - 2018) CG 150 - ALL (2004 - 2016) CG 160 START (2016 - 2024)
YAMAHA:	FACTOR 125 (2009 - 2016)
HONDA:	NXR 125 BROS (2003 - 2015) NXR 150 BROS (2003 - 2015) NXR 160 BROS (2014 - 2024) XRE 190 (2016 - 2020)
YAMAHA:	CROSSER 150 S / Z (2024) XTZ 150 CROSSER (2014 - 2020)
TRAXX:	FLY 150 (2016 - 2017) FLY 250 (2015 - 2018)
SHINERAY:	DISCOVER 250 (2014 - 2018) EXPLORER 150 (2017 - 2018) SHI 175 (2024)
HAOJUE:	NK 150 (2023 - 2024)
HONDA:	SAHARA 300 (2024) XRE 300 - (2009 - 2020) LANDER 250 ABS (2024)
YAMAHA:	TÉNÉRÉ 250 (1996 - 2020) XTZ 125 - ALL (2002 - 2016) XTZ 250 LANDER (2006 - 2018)

PREPARED  
TO ANY  
LAND CONDITION.

REINF  
STRUCTURE  
REINFORCED.



DIRECTION OF ROTATION →

The Bunker Adapt Dust was specially developed for mixed use, serving both urban and enduro/adventure motorcycles. It is the combination of the best performance between antagonistic environments in just one tire. We merge the needs of the off-road environment with those of the city. With more aggressive attraction than any other tire on rough terrain; It is the perfect choice for overcoming extreme conditions, ranging from flat pavement to gravel and dirt. It is the ideal tire for motorcyclists who want maximum durability and away from constant replacements. It is designed for a wide range of terrains and adverse conditions, eliminating the need to change calibration between on-road and off-road environments.



# BUNKER X-IT

## MID-SOFT

### TYPE OF LAND: MID-SOFT

Ideal for **soft terrain** such as sand, mud and aerated earth.



SIZES:

FRONT  
21" **80/100-21**  
M/C 51M TT

REAR  
18" **100/100-18**  
M/C 59M TT

### CONDITIONS OF USE AND VARIETY OF LAND

SAND	SOFT TERRAIN	MEDIUM TERRAIN	HARD TERRAIN
<b>BUNKER X-IT</b>			

### → ANTI-REBOUND RUBBER (A.R.B.)

The thicker rubber is located above the rim to avoid the "rebound effect", allowing greater comfort when completing jumps. It also helps ensure the fit between the tire and the wheel in cases of low pressure.

### → TABS REFRIGERATION (SIDEWALL)

The sides (sidewalls) of tires used on rough terrain tend to suffer deformation, as they are sensitive to low pressure, which is responsible for increasing the temperature and causing cracks. The side flaps have the function of cooling it, without compromising adhesion, durability and preventing the appearance of cracks.

### → DOUBLE DIRECTION OF ROTATION

(INVERSION OF THE TIRE)

With the possibility of the tire rotating in both directions, wear is reduced and its durability is prolonged. There will be an increase in useful life and traction efficiency.



FRONT  
TIRE:

INNER TUBE  
FRONT:

REAR  
TIRE:

INNER TUBE  
REAR:

INDUSTRY:

MODEL:

### MAIN

APPLICATIONS: **80/100-21 (MX 0521) + 100/100-18 (MX 0618)**

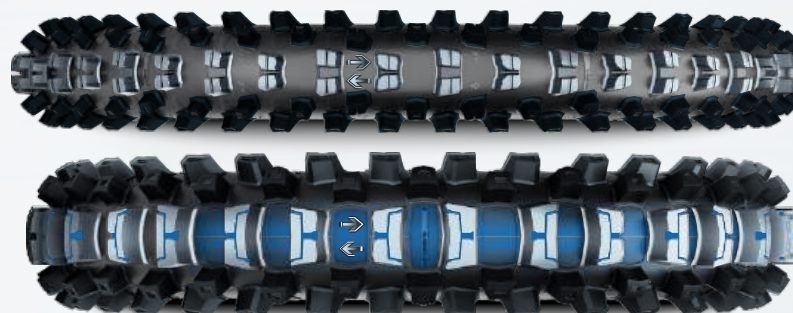
HONDA:	CRF 230F (2007 - 2017) CRF 250L (2013 - 2015) CRF 250F (2018 - 2024)
YAMAHA:	TT-R 230 (2005 - 2020)
KAWASAKI:	KLX 140G (2017 - 2019)

### → CENTRAL BLOCKS WITH DIFFERENT SPACING

Blocks with an inverted Double-V design help with traction and are necessary to promote greater grip during braking and acceleration.

### → V.S. VARIED SPACING

Innovative technology features different block sizes and empty areas in the tread for better performance on soft terrain.



### → C.S.P.C. CONTROL SYSTEM PRESSURE IN THE CASING

Low reliefs reduce the thickness of the carcass and relieve tension at strategic points, in addition to helping to reduce driver fatigue. Prevents the tire from leaving the rim, even in cases of low pressure, without damaging the air chamber or compromising grip and comfort.



USES REINFORCED  
INNER TUBE

CONTACT  
AREA  
EXPANDED





# BUNKER X-OUT

## MID-HARD

**TYPE OF LAND:**  
**MID-HARD**

Ideal for **mixed terrain**, uneven, dirt terrain and moderately difficult off-road trails.



SIZES:

FRONT		REAR	
21"	<b>80/100-21</b> M/C 51R TT	18"	<b>100/100-18</b> M/C 59R TT
		19"	<b>110/90-19</b> M/C 62R TT

**CONDITIONS OF USE AND VARIETY OF LAND**

SAND	SOFT TERRAIN	MEDIUM TERRAIN	HARD TERRAIN
		<b>BUNKER X-OUT</b>	

**GRIP AND CONTROL FOR HIGH PERFORMANCE MOTORCYCLE**

There are new features and innovations for BUNKER tires in the X-OUT line. The tread has been improved with a more radical design and larger blocks that maintain traction at various lean angles. They were developed to enhance braking performance and grip in corners. At the same time, they maintain an optimized contact area. This makes cornering easier and increases traction.



**FINS REFRIGERATION**



**USES REINFORCED INNER TUBE**

**FINS REFRIGERATION**

The sides (sidewalls) of tires used on rough terrain tend to suffer deformation, as they are sensitive to low pressure, which increases the temperature and compromises the structure. The fins have the function of cooling the tire, not compromising adhesion, durability and preventing the appearance of cracks.

**REINFORCED BARS**

The tires have new bars reinforcement that connects the blocks, they prolong toughness, durability and prevent cracks at the base of the tread.



**MAIN APPLICATIONS:**

FRONT TIRE:	INNER TUBE FRONT:	REAR TIRE:	INNER TUBE REAR:	INDUSTRY:	MODEL:
80/100-21	(MX 0521) +	100/100-18	(MX 0618)	HONDA:	CRF 230F (2007 - 2017) CRF 250L (2013 - 2015) CRF 250F (2018 - 2024)
80/100-21	(MX 0521) +	110/90-19	(MX 0619)	YAMAHA:	TT-R 230 (2005 - 2020) YZ-250 / 250F (2024)
				KAWASAKI:	KLX 140G (2017 - 2019)
				HONDA:	CRF 250R (2020 - 2024)
				YAMAHA:	RM-Z250 (2011 - 2022) RM-Z450 (2015 - 2021)
				SUZUKI:	KX 250 / F (2001 - 2023) KX 450 (2019 - 2024)
				KAWASAKI:	125 SX (2014 - 2023) 150 SX (2015 - 2022) 250 SX (2012 - 2024) 250 SX-F (2023 - 2024) 350 SX-F (2012 - 2024) 450 SX-F (2012 - 2024)



**COMPOUND AND STRUCTURE SMART**

**NEW TECHNOLOGY, DESIGN AND COMFORT.**

The new structure, which incorporates densely constructed polyester layers, is lighter and stronger without compromising durability. The new carcass better absorbs the impact and opposing braking forces, minimizing the "rebound" effect. Provides more comfort when driving again and helps reduce the driver's efforts. Side integrity is maintained through the use of denser construction plies, providing greater strength and reducing the chance of damage.



**INVERSION OF THE TIRE**

**DOUBLE DIRECTION OF ROTATION**

With the possibility of the tire rotating in both directions, wear will be reduced and its durability prolonged. There will be an increase in useful life and traction efficiency.



## INNER TUBES



SIZES:

14"	<b>MI 0514</b>	19"	<b>MI 0519</b>
17"	<b>MI 0417</b> <b>MI 0617</b>		<b>MX 0619</b> REINFORCED
18"	<b>MI 0518</b> <b>MI 0618</b> <b>MX0618</b> REINFORCED	21"	<b>MI 0521</b> <b>MX 0521</b> REINFORCED

### CONTROL STRICT OF QUALITY

- ✦ Our machinery is constantly inspected to ensure that the process runs flawlessly.
- ✦ The compound is filtered to ensure that the extrusion process forms the inner tube wall evenly and without irregularities. This ensures an entirely strong inner tube, making cuts and punctures difficult.
- ✦ We carry out inspection examinations of the inner tubes before release and shipment to our distributors.

### THE IRA TIRES IS PART OF TORTUGA GROUP INNER TUBES



- ✦ Tortuga Inner Tubes is the leader in this segment in Latin America. We are specialists in the development and manufacture of high performance and durable elastomeric compounds (rubber).
- ✦ We also supply inner tubes to the main agricultural machinery and implement manufacturers in Brazil; equipping original factory products.

**INNER TUBE - APPLICATIONS**

<b>MI 0417</b>	<b>MI 0514</b>	<b>MI 0518</b>	<b>MI 0519</b>
60 / 100 - 17	80 / 100 - 14	80 / 100 - 18	70 / 100 - 19
70 / 100 - 17	90 / 100 - 14	90 / 100 - 18	90 / 100 - 19
70 / 90 - 17	80 / 90 - 14	80 / 90 - 18	80 / 90 - 19
80 / 90 - 17	90 / 90 - 14	90 / 90 - 18	90 / 90 - 19
70 / 80 - 17	100 / 90 - 14	100 / 80 - 18	100 / 80 - 19
80 / 80 - 17	90 / 80 - 14	2.75 - 18	2.75 - 19
2.25 - 17	100 / 80 - 14	3.00 - 18	3.00 - 19
2.50 - 17	110 / 80 - 14	2.75 - 17	3.60 - 19
2 ¼ - 17 ciclomotor	2.75 - 14	3.00 - 17	
2 ½ - 16 ciclomotor	3.00 - 14		
2 ½ - 17 ciclomotor			

<b>MI 0521</b>	<b>MI 0617</b>	<b>MI 0618</b>
80 / 100 - 21	100 / 90 - 17	100 / 100 - 18
90 / 100 - 21	110 / 90 - 17	110 / 100 - 18
80 / 90 - 21	120 / 90 - 17	100 / 90 - 18
90 / 90 - 21	100 / 80 - 17	110 / 90 - 18
2.75 - 21	110 / 80 - 17	120 / 90 - 18
3.00 - 21	120 / 80 - 17	110 / 80 - 18
	130 / 80 - 17	120 / 80 - 18
	110 / 70 - 17	3.50 - 18
	130 / 70 - 17	4.00 - 18
	4.00 - 17	4.10 - 18
	4.50 - 17	4.60 - 18
	4.60 - 17	
	3.25 - 16	

**CÂMARAS DE AR - APLICAÇÕES**

<b>MX 0521</b>	<b>MX 0618</b>	<b>MX 0619</b>
80 / 100 - 21	100 / 100 - 18	100 / 90 - 19
90 / 100 - 21	110 / 100 - 18	110 / 90 - 19
90 / 90 - 21	110 / 90 - 18	120 / 90 - 19
2.75 - 21	120 / 90 - 18	110 / 80 - 19
3.00 - 21	110 / 80 - 18	120 / 80 - 19
	120 / 80 - 18	130 / 80 - 19
	3.50 - 18	3.50 - 19
	4.00 - 18	4.00 - 19



# ATTENTION TO DETAILS

---



It symbolizes our commitment to always developing the best product for you and your motorcycle.

You are the one who motivates us to strive and ensure that we are always attentive to the smallest details during all stages of manufacturing.

We will always continue to be specific and judicious in the production of tires full of technology, creativity and ingenuity to guarantee your confidence in our products.





# D + T

## TIRE SET FRONT + REAR

IRATIRES recommends the use of a pair, front and rear, of the same model from our product line to obtain the best performance while riding.

**MASKED SCOOTER**

FRONT

14"

**90/90-14**  
M/C 46P TL



**MASKED SCOOTER**

REAR

14"

**100/90-14**  
M/C 57P TL



**SIDEWALL**  
INFORMATION ON THE SIDE OF THE TIRE



**TUBELESS OR TUBETYPE**

**T.W.I.**  
"Tread Wear Indicator"  
Maximum wear indicator of the tread



**SECURITY WARNING**  
Description of legal requirements. Respect these data for the correct tire use.  
(side with information in English)



**MANUFACTURER DATA**  
Country of manufacture and CNPJ (National Register of Legal Entities - Brazilian document)  
(side with information in Portuguese)

**PRODUCTION DATE**  
**EXAMPLE: 4019**  
40=production week  
19=year of manufacture  
(side with information in English)  
(Item added during manufacturing, side with information in English)

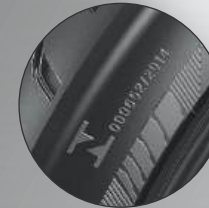
**TIRE NAME**  
Product line name

**TIRE SIZE:**  
**EXAMPLE: 140/70-17 M/C 66S**  
140: Section width (mm)  
70: Tire height (%) compared to width  
17: Rim Diameter (inches)  
M/C: Exclusive motorcycle tire  
66: Load index code  
S: Speed index code

**INMETRO CERTIFICATION (NATIONAL INSTITUTE OF METROLOGY, QUALITY AND TECHNOLOGY)**  
Brazilian approved body that tests and approves the use of the tire.  
(Side with information in Portuguese)

**DIRECTION OF ROTATION**  
The arrow indicates the direction of rotation according to the mounting position

**MANUFACTURER NAME**





**TABLE - SPEED INDEX**

<b>SYMBOL</b>	<b>KM/H</b>	<b>SYMBOL</b>	<b>KM/H</b>
D	65	Q	160
E	70	R	170
F	80	S	180
G	90	T	190
J	100	U	200
K	110	H	210
L	120	V	240
M	130	ZR	>240
N	140	W	270
P	150	Y	300

**TABLE - WEIGHT INDEX**

<b>INDEX</b>	<b>KG</b>	<b>INDEX</b>	<b>KG</b>	<b>INDEX</b>	<b>KG</b>
31	109	43	155	55	218
32	112	44	160	56	224
33	115	45	165	57	230
34	118	46	170	58	236
35	121	47	175	59	243
36	125	48	180	60	250
37	128	49	185	61	257
38	132	50	190	62	265
39	136	51	195	63	272
40	140	52	200	64	280
41	145	53	206	65	290
42	150	54	212	66	300



CURITIBA - PARANA - BRAZIL



**COPYRIGHT © 2026 IRA TIRES**



All rights reserved.

IRA TIRES owns the design and development copyright.

All texts, images, graphics and other materials are protected by copyright, intellectual property rights belong to IRA TIRES.


Brands:

All trademarks displayed in this material are the exclusive property of IRA TIRES.

A GROUP  
COMPANY



**IRA.COM.BR**

 | iratires

 | iratiresofficial



**+55 0800 644 4404**



**SAC +55(41)99801-1117**